

# FOR LEASE—OFFICE / RETAIL

1550 Carling Avenue

OTTAWA, ONTARIO, CANADA

2,138 SF



## SUMMARY

This former “Revlon Building” has undergone an award winning transformation, having received The Outstanding Building of The Year (TOBY) Award from BOMA. It is now home to the Government of Canada in addition to a number of private insurance companies. This Class A office facility is approximately 130,000 sf with a professionally managed parking lot and offers accessibility to east-west and north-south transit routes and a new pylon sign with double exposure to both East and West bound routes on Highway 417 (the Queensway). Located minutes from popular shopping centers and restaurants, this building offers the perfect location for busy business professionals.

**The Regional Group of Companies Inc.**

1737 Woodward Drive, 2nd Floor  
Ottawa, Ontario, Canada  
K2C 0P9  
P—613 230-2100  
F—613 230-9880



For more information, contact:

**Sheila Olivieri**  
Property Manager, Commercial Division

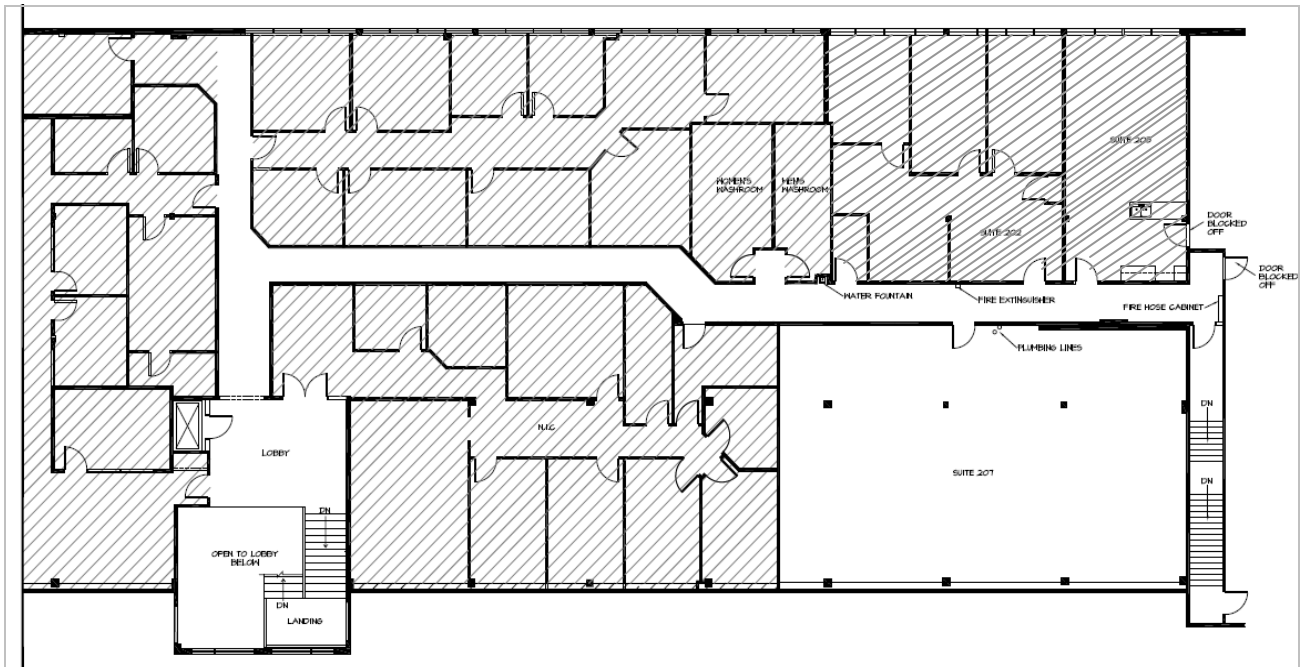
P—613.230.2100 x 7220

[solivieri@regionalgroup.com](mailto:solivieri@regionalgroup.com)

# 1550 Carling Avenue

OTTAWA, ONTARIO, CANADA

## FLOOR PLAN



### The Regional Group of Companies Inc.

1737 Woodward Drive, 2nd Floor  
Ottawa, Ontario, Canada  
K2C 0P9  
P—613 230-2100  
F—613 230-9880



For more information, contact:

**Sheila Olivieri**  
Property Manager, Commercial Division

P—613.230.2100 x 7220

[solivieri@regionalgroup.com](mailto:solivieri@regionalgroup.com)

# 1550 Carling Avenue

OTTAWA, ONTARIO, CANADA

## PROPERTY HIGHLIGHTS

<b>Area Available:</b>	<b>Suite 207 - 2,138 square feet</b>
<b>Availability:</b>	<b>Immediate</b>
<b>Rental Rate:</b>	<b>\$12.00 psf/annum</b>
<b>Additional Rent:</b>	<b>\$13.97 psf/annum (estimated 2014)</b>
<b>Location:</b>	<b>1550 Carling Avenue; South Side of Carling, North Side Laperriere and West Side Coldrey Avenues – Wood ward Industrial Area</b>
<b>Legal Description:</b>	<b>Plan 357791 PT Lot 1 Carling S.</b>
<b>Site Area:</b>	<b>5.45 Acres; (4,343.48F)</b>
<b>Zoning:</b>	<b>CG-h[267]F(1.0)</b>

The Regional Group of Companies Inc.

1737 Woodward Drive, 2nd Floor  
Ottawa, Ontario, Canada  
K2C 0P9  
P—613 230-2100  
F—613 230-9880



For more information, contact:

**Sheila Olivieri**  
Property Manager, Commercial Division

P—613.230.2100 x 7220

[solivieri@regionalgroup.com](mailto:solivieri@regionalgroup.com)

# 1550 Carling Avenue,

OTTAWA, ONTARIO, CANADA

## LOCATION



The Regional Group of Companies Inc.

1737 Woodward Drive, 2nd Floor  
Ottawa, Ontario, Canada  
K2C 0P9  
P—613 230-2100  
F—613 230-9880



For more information, contact:

**Sheila Olivieri**  
Property Manager, Commercial Division

P—613.230.2100 x 7220

[solivieri@regionalgroup.com](mailto:solivieri@regionalgroup.com)

1550 Carling Avenue,  
OTTAWA, ONTARIO, CANADA

## CONTACT US

For more information, please contact:

### THE REGIONAL GROUP OF COMPANIES INC.

1737 Woodward Drive, 2nd Floor

Ottawa, Ontario, Canada

K2C 0P9

T 613.230.2100

F 613.230.9880

Sheila Olivieri

*Property Manager*

T 613.230.2100 x7220

[solivieri@regionalgroup.com](mailto:solivieri@regionalgroup.com)

Or Visit Us Online—

[www.regionalgroup.com](http://www.regionalgroup.com)

The information herein contained has not been verified by The Regional Group of Companies Inc. (the 'Agent'). The Agent does not warrant in any manner, implied or otherwise, that the information herein contained is accurate. The Agent does not, and will not, accept or assume any liability for any consequence or result, negative or otherwise, arising from the reliance of the party receiving this information (the 'Recipient') on the information herein contained. It is the sole and exclusive responsibility of the Recipient to independently verify all information herein contained and perform all due diligence as reasonably required. The information herein contained is subject to change and / or alteration without prior notice, and the Agent hereby reserves the exclusive right to remove from the market said information and / or the Property / Space for Lease to which it pertains. The Regional Group of Companies Inc. is acting solely as an agent for its client, 105 Carling Avenue Inc., and is not acting in its personal or corporate capacity.

