



SPACE FOR LEASE

111A Rideau Street — Property for Lease Office Space



Leaseable Area: Approximately 8,000 sq. ft.

Gross Rent: \$7,000.00 per month
Cleaning & hydro by Tenant

Heritage building located near the Byward Market, along Ottawa’s famous Rideau Street. Most of the City’s museums and public buildings close by not to mention more shopping on Sussex Drive, and The Rideau Centre. Public parkade at Rideau Centre and 70 Clarence (between Williams and Byward). Located on major bus routes

BUILDING DATA

Location:	111A Rideau Street (close to Rideau Centre)
Gross Rent:	\$7,000 per month, cleaning and utilities by Tenant
Area Available:	8,000 SF (+/-)
Availability:	Immediately
Sprinklers:	Fully Sprinklered
Parking:	Public parking
Zoning:	MDS 73—Mixed Use Downtown Zone

Ed Ruest
Property Manager
Commercial Division
eruest@regionalgroup.com
T 613 230-2100 ext 7102
F 613 230-9880

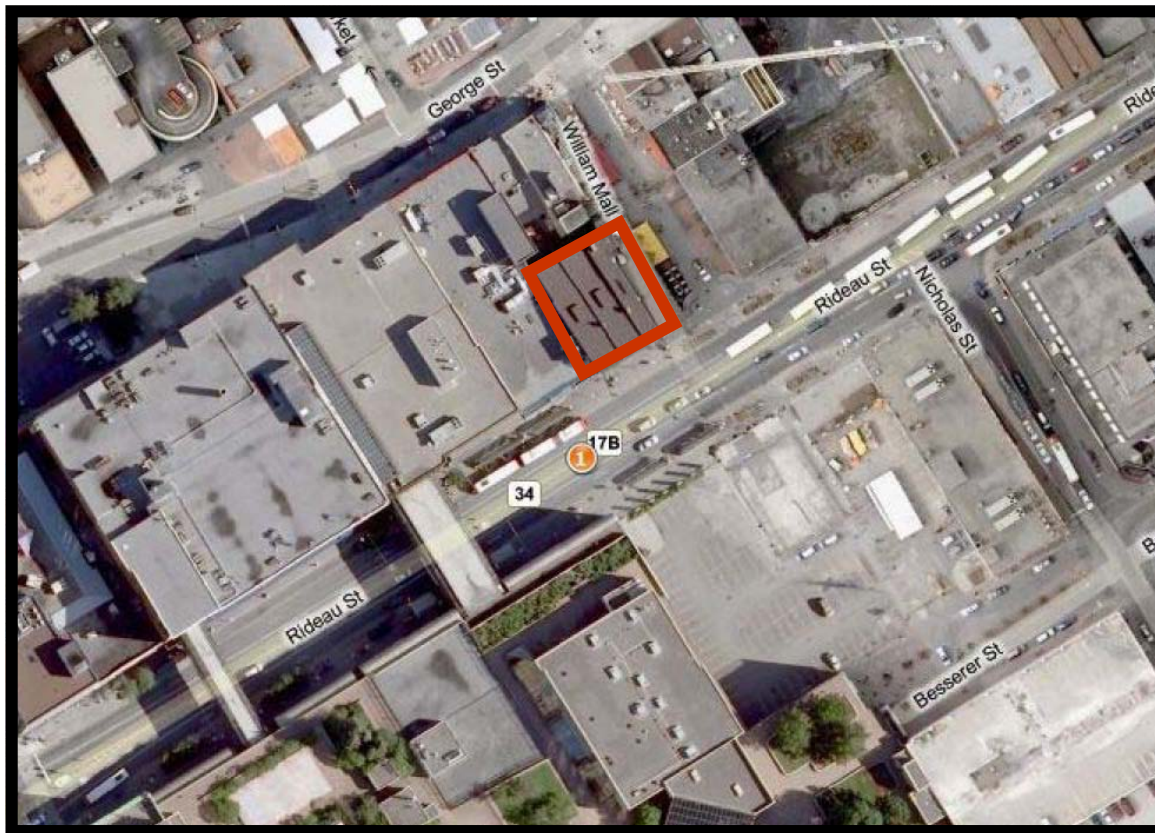


For More Information Please Contact: The Regional Group of Companies
www.regionalgroup.com 613-230-2100



SPACE FOR LEASE

111A Rideau Street — Property for Lease
Office Space

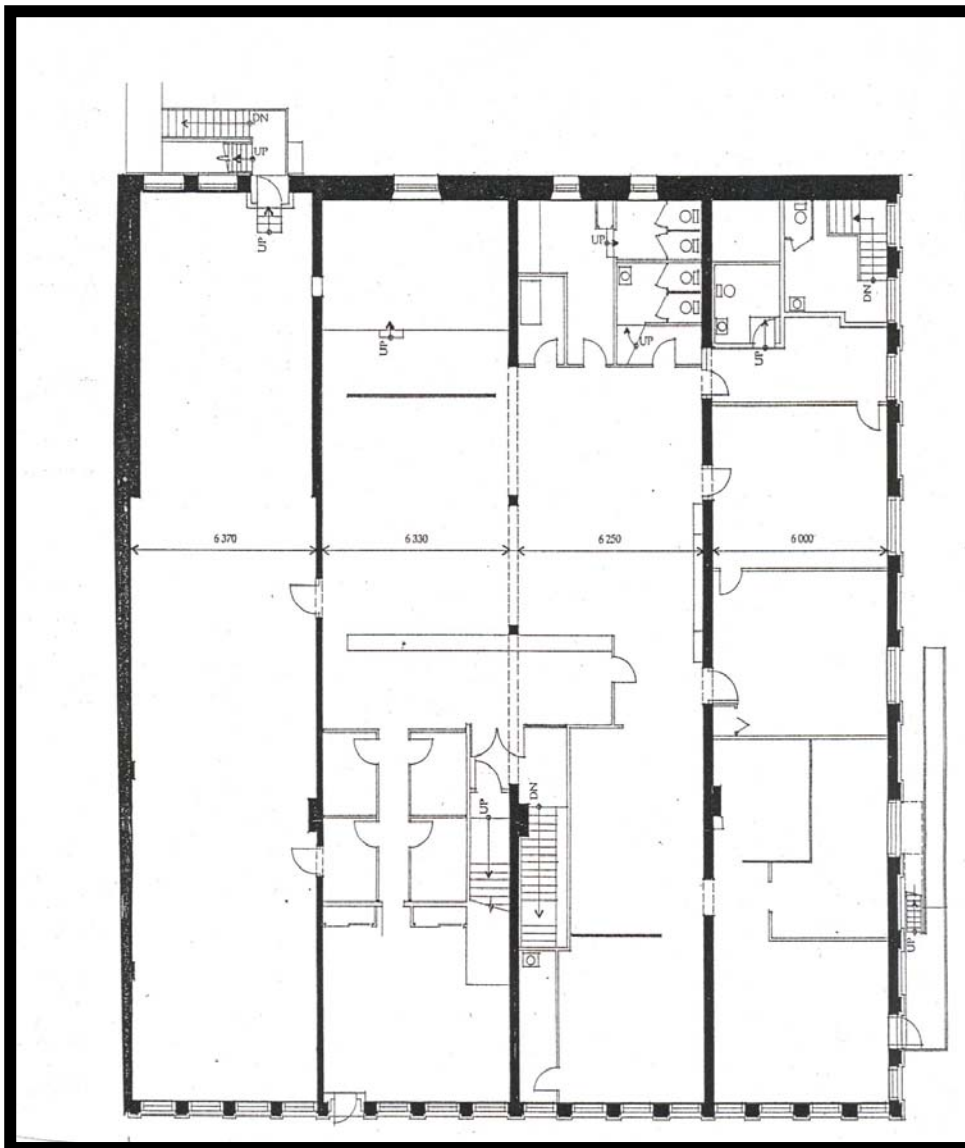


REGIONAL
THE REGIONAL GROUP

For More Information Please Contact: The Regional Group of Companies
www.regionalgroup.com 613-230-2100



SPACE FOR LEASE



For More Information Please Contact: The Regional Group of Companies
www.regionalgroup.com 613-230-2100